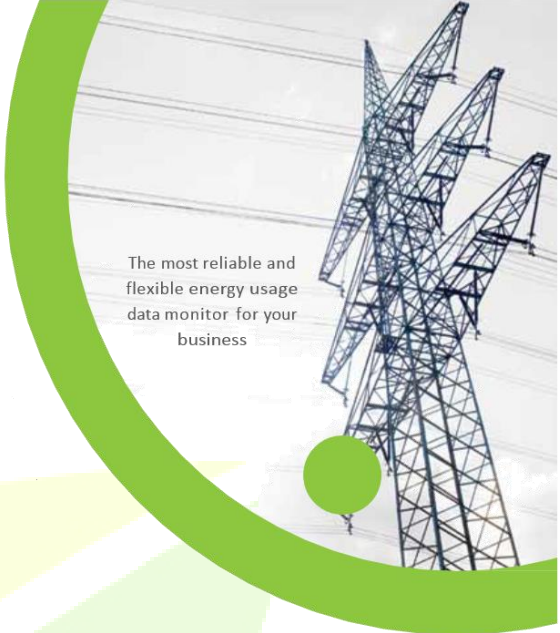
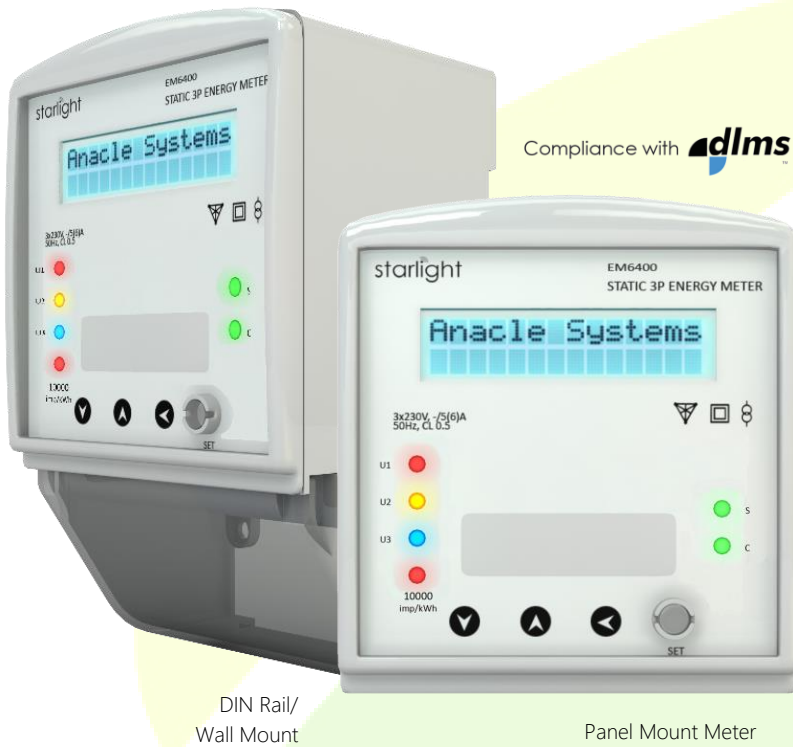


Anacle Starlight® EM6400 Power Meter



The most reliable and flexible energy usage data monitor for your business



Compliance with **dlms**

DIN Rail/
Wall Mount

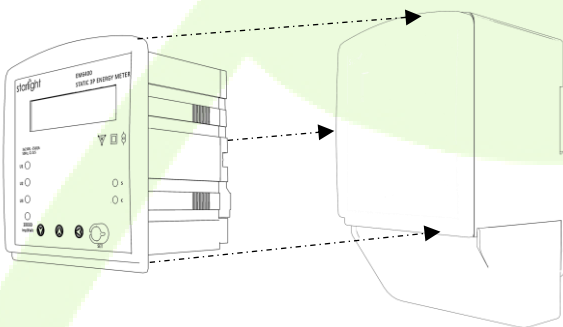
Panel Mount Meter

Built on the concept of performance, efficiency, and durability. Starlight® EM6400 Power Meter offer you a flexible meter that is compatible with a wide range of 3-phase distribution services.

Starlight® EM6400 Power Meter vaunt a unique and efficient design that monitors the load with precision, ensuring accurate energy usage data monitoring in high voltage distribution.

Unlike most, Starlight® EM6400 Power Meter has an in-built Ferroelectric RAM (FeRAM) which enable you to have more than a trillion times more write-erase cycles on data storage in comparison with conventional nonvolatile RAM.

Installation of meter into the DIN Casing:



Starlight® EM6400 Power Meter provide you flexibility as it has the compatibility to be mounted on DIN Rail, Wall or Panel, making the installation process on your premises flexible and fast. In addition, Starlight® EM6400 Power Meter has the ability to remotely identify whether a meter has been tampered, effectively preventing energy theft.

With power and precision, Starlight® EM6400 Power Meter offers accurate, effective and efficient monitoring of your energy consumption and power quality, effectively becoming your solution to a better and greener future.

Features of Starlight® EM6400 Power



- Ability to identify if meter has been tampered with



- Extended writing cycle for data Storage



- Inside the circle - Multi Rating
- Below the circle - 3P3W, 3P4W, 110V, 220-240V, 50/60Hz



- Compatible with a wide range of mount surfaces.
- Compatible with multiple 3-phases services

Technical Data of EM6400 Power Meter

Standard Compliance

Accuracy	IEC62052 - 11 IEC62053 - 22
Safety EMI/ EMC	IEC62052 - 11 IEC62053 - 22
Durability	IEC EN 62059 – 32 – 1
Accuracy class	Class 0.5s

Accuracy class

Voltage (V)

Reference Voltage (3xUn/Un)-4W	3x110V, 3x220Vac, 230Vac, 240Vac
Voltage Range (With PoE)	100Vac to 300Vac
Voltage Range (Without PoE)	80Vac to 300Vac

Current (A)

Rated Current (In)	3x5A
Maximum Current (Imax)	3x6A
Starting Current	0.001In
Overload Current	120%In for 1 hour
Short time over current	20In. for 0.5sec

Frequency

	50Hz, 60Hz (± 2%)
--	-------------------

Meter Constant

	10000imp/kWh
--	--------------

Connection

	Three Phase Four Wire (Wye)
	Three Phase Three Wire (Delta)
Environment Conditions	
Operating Temperature	-20°C to 70°C
Storage Temperature	-20°C to 85°C
Humidity	5% to 95% RH at 40°C
Resistance to Heat and Fire	960°C (IEC 60695 – 2 – 11)

LED indicators

Phase Indicator	U1, U2, U3
-----------------	------------

Calibration Pulse	Yes
-------------------	-----

Push Buttons	Yes
---------------------	-----

Data Storage	128kB Nonvolatile FeRam*
---------------------	--------------------------

Power Consumption	<2W stand alone
--------------------------	-----------------

Voltage Circuit	<4W with PoE
------------------------	--------------

Current Circuit	<10VA
------------------------	-------

Display	16x2 Alphanumeric
----------------	-------------------

Model Number/Order code	
--------------------------------	--

EM6400-A-XW	A: 0 - Wall Mount Meter 1 - DIN Rail Mount Meter 2 - Panel Mount Meter X: 3 - Three Phase Three Wire 4 - Three phase Four Wire
-------------	--

Mechanical

Wall Mount overall Dimensions (mm)	8.3 (W) x 156.7 (H) x 84.7 (D)
Panel Mount overall Dimensions (mm)	98.3 (W) x 108 (H) x 79.4 (D)
Meter Rear Dimensions (mm)	1/4 DIN (92 x 92)
IP rating	IP21, IP51 (Panel Meter)
Terminal Cover	Transparent
Security Sealing Arrangement	Yes, Provided

Weight

DIN Mount Meter	600g
Panel Mount Meter	361g

Material

	Glass filled Polycarbonate
--	----------------------------

Instantaneous Parameter

Phase Voltage (Vrms) L1,L2,L3	V
Phase Current (Irms) L1,L2,L3	A
Active Power	kW
Apparent Power – Import and Export	kVA+ and kVA-
Line Frequency	Hz
Power Factor	0-1-0

System Sampling Rate

	28125 samples per second
--	--------------------------

Load Control

	Relay output. 265V, 2A
--	------------------------

Energy Parameter

Active Energy (Import and Export)	kWh
-----------------------------------	-----

Other Parameters

RTC	Yes
Max Demand	Yes***
Hardware Status Monitoring	Yes

Power Quality (Through software or meter) ***

Under Voltage, Over Voltage Detection	Yes
Overload Detection	Yes
Missing Phase, Missing Load Detection	Yes

Communications

Ethernet (IEEE 802.3at – 2009) PoE	RJ45 Cat 5 cable
Modbus TCP Protocol **	Yes

Isolated Pulse Output

	kWh
--	-----

Internally Programmable Ratios

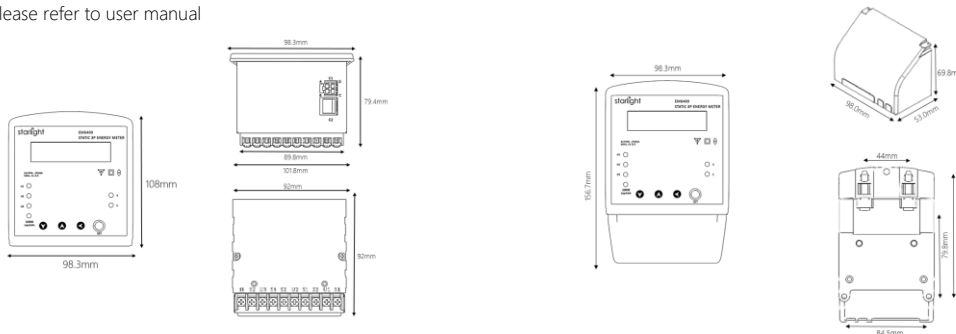
CT Ratio	Yes
VT Ratio	Yes

*Approximately 90 days of energy reading data.

** Upon request

***Maximum demand is only available with software

For more details please refer to user manual



Anacle Headquarters
1 Fusionopolis View, Sandcrawler,
#08-02, Singapore 138577
Main: +65 6734 9012
Fax: +65 6734 9011
Email: info@anacle.com

Anacle Malaysia
3-12-6, Tower 3, UOA Business Park
Jalan Pengaturacaraan U1/51A,
Seksyen U1, 40150 Shah Alam,
Selangor Darul Ehsan, Malaysia
Phone: +603-5569 9012
Fax: +603-5569 9013

Anacle India
S26/S27, Destination Center 1,
Nanded City,
Pune 411041, India