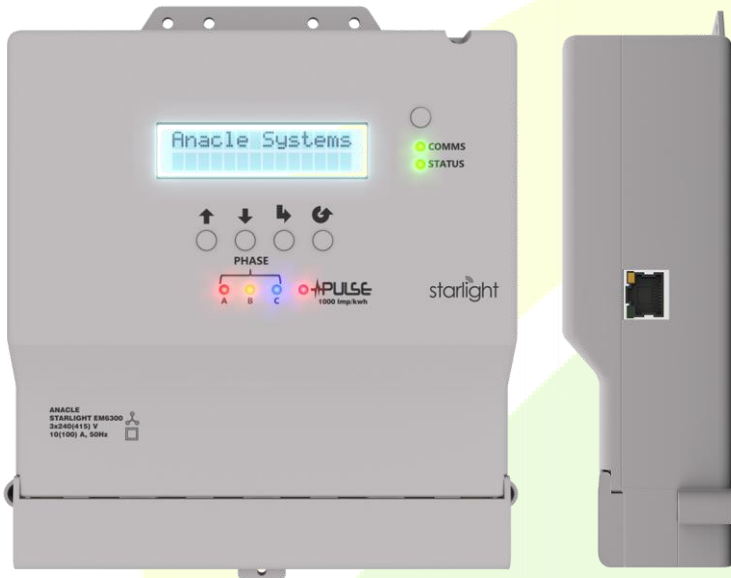


Anacle Starlight® EM6300 Static Energy Meter



Track energy consumption
with the highest accuracy.



Built on a concept based on performance, trustworthiness and permanence. Starlight® EM6300 Static Energy Meter offers you high performance capabilities that ensures pinpoint measurement on energy consumption and power quality.

Starlight® EM6300 Static Energy Meter, armed with a unique Hardware Status Monitoring function, has the ability to remotely identify meter tampering which effectively prevents energy theft. Furthermore, Starlight® Static Energy Meter has capability to record data in real time.

Starlight® EM6300 Static Energy Meter is equipped with Power over Ethernet (PoE) port, which eliminates the need of additional AC power supply for communication equipment, therefore saving time and cost during installation. Unlike most meters, Starlight® EM6300 Static Energy Meter has an in-built Ferroelectric RAM (FeRAM) which enable more than a trillion times more write-erase cycles on data storage in comparison with normal nonvolatile RAM.

With power and precision, Starlight® EM6300 Static Energy Meter ensures quality, effective and efficient monitoring of energy consumption and power quality enabling better and greener future.

Features of EM6300 Meter

Hardware Status Monitoring

- Ability to identify if meter has been tampered with

Ferroelectric RAM

- Extended writing cycle for data Storage

Power Over Ethernet

- Save time and cost during installation process

Real Time Clock

- Ability to record data with actual time and date

starlight

Technical Data of EM6300 Static Energy Meter

Standard Compliance

Accuracy	IEC62052 - 11 IEC62053 - 21
Safety	
EMI/EMC	IEC62052 - 11 IEC62053 - 21 Class 1

Accuracy class

Voltage (V)

Reference Voltage (3xUn/Un)-4W	3x220Vac, 230Vac, 240Vac
Voltage Range (With PoE)	100Vac to 300Vac
Voltage Range (Without PoE)	80Vac to 300Vac

Current (A)

Rated Current (Ib)	3x10A
Maximum Current (I _{MAX})	3x100A
Starting Current	0.04Ib
Overload Current	120%Ib for 1 hour
Short Time Over Current	30Ib for 0.5cycle

Frequency

	50Hz, 60Hz (± 2%)
--	-------------------

Meter Constant

	1000imp/kWh
--	-------------

Connection

	Three Phase Four Wire (Wye)
--	-----------------------------

Environment Conditions

Operating Temperature	-20°C to 60°C
Storage Temperature	-20°C to 85°C
Humidity	5% to 95% RH at 40°C
Resistance to Heat and Fire	960°C (IEC 60695 – 2 – 11)

LED Indicators

Phase Indicator	U1, U2, U3
-----------------	------------

Calibration Pulse	Yes
-------------------	-----

Push Buttons	Yes
--------------	-----

Data Storage

Nonvolatile FeRam*	128kB
--------------------	-------

Power Consumption

Voltage Circuit	<2W stand alone
-----------------	-----------------

	<4W with PoE
--	--------------

Current Circuit	<10VA
-----------------	-------

Display

LCD with Backlight	16x2 Alphanumeric
--------------------	-------------------

Model Number/Order code

Three Phase Four Wire-Direct	SL-EM6300-3PI
------------------------------	---------------

Mechanical

Overall Dimension (mm)	158 (W) x 186 (H) x 55 (D)
Weight	1kg
Terminal Hole Diameter	9.6mm
IP Ratings	IP20, IP51
Terminal Cover	Short type
Security Sealing Arrangement	Yes, Provided
Material	Glass filled Polycarbonate

Instantaneous Parameter

Phase Voltage (Vrms) L1,L2,L3	V
Phase Current (Irms) L1,L2,L3	A
Active Power	kW
Apparent Power – Import and Export	kVA+ and kVA-
Line Frequency	Hz
Power Factor	0-1-0

System Sampling Rate

	28125 samples per second
--	--------------------------

Load Control

	Relay output. 265V, 2A
--	------------------------

Energy Parameter

Active Energy (Import and Export)	kWh
-----------------------------------	-----

Other Parameters

RTC	Yes
Max Demand	Yes***
Hardware Status Monitoring	Yes

Power Quality (Through software or meter) ***

Under Voltage, Over Voltage Detection	Yes
Overload Detection	Yes
Missing Phase, Missing Load Detection	Yes

Internally Programmable Ratios

CT Ratio	Yes
VT Ratio	Yes

Communications

Ethernet (IEEE 802.3at – 2009) PoE	RJ45 Cat 5 cable
------------------------------------	------------------

Modbus TCP protocol **	Yes
------------------------	-----

*Approximately 90 days of energy reading data.

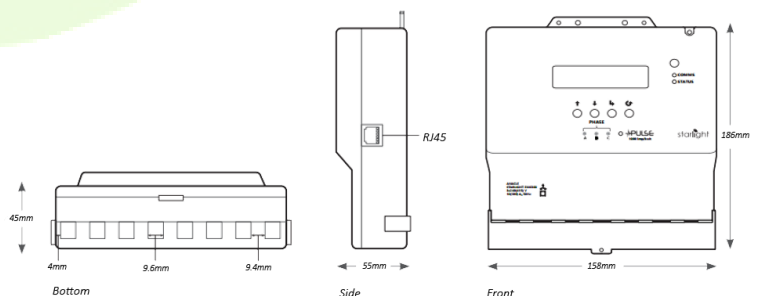
** Upon request

***Maximum demand is only available with software

For more details please refer to user manual



INSIGHT
IDEAS
INNOVATION



Anacle Headquarters

1 Fusionopolis View, Sandcrawler,
#08-02, Singapore 138577
Main: +65 6734 9012
Fax: +65 6734 9011
Email: info@anacle.com

Anacle Malaysia

3-12-6, Tower 3, UOA Business Park
Jalan Pengaturacara U1/51A,
Seksyen U1, 40150 Shah Alam,
Selangor Darul Ehsan, Malaysia
Phone: +603-5569 9012
Fax: +603-5569 9013

Anacle India

S26/S27, Destination Center 1,
Nanded City,
Pune 411041, India